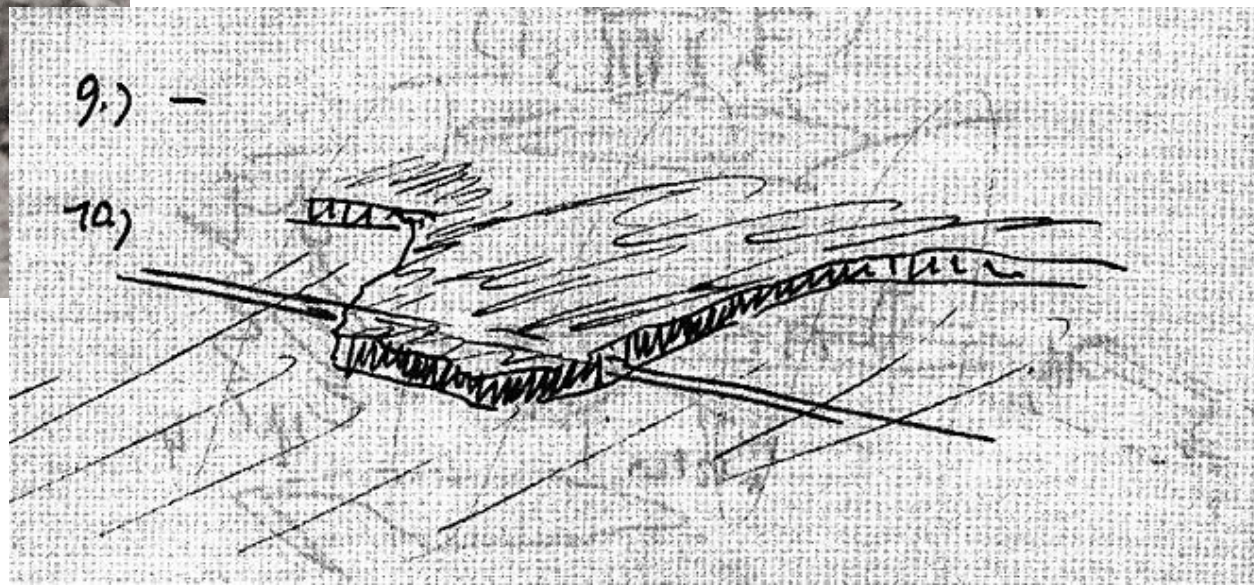


Stavební díl 30





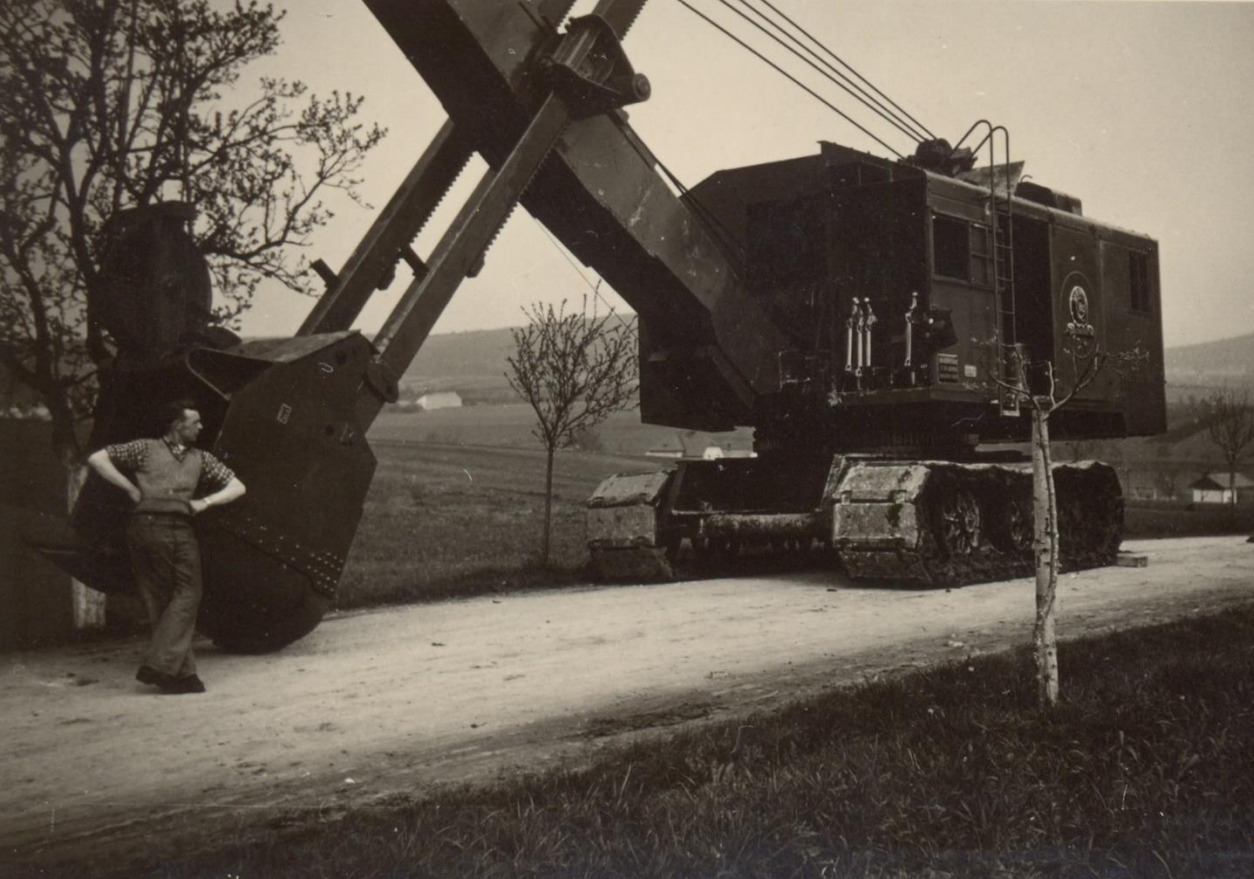








Porovnání úseků 30 a 31
Zemní práce 65% a 99%
Mostní stavby:
Dokončené , nedokončené
Dělníci, židé, zajatci....



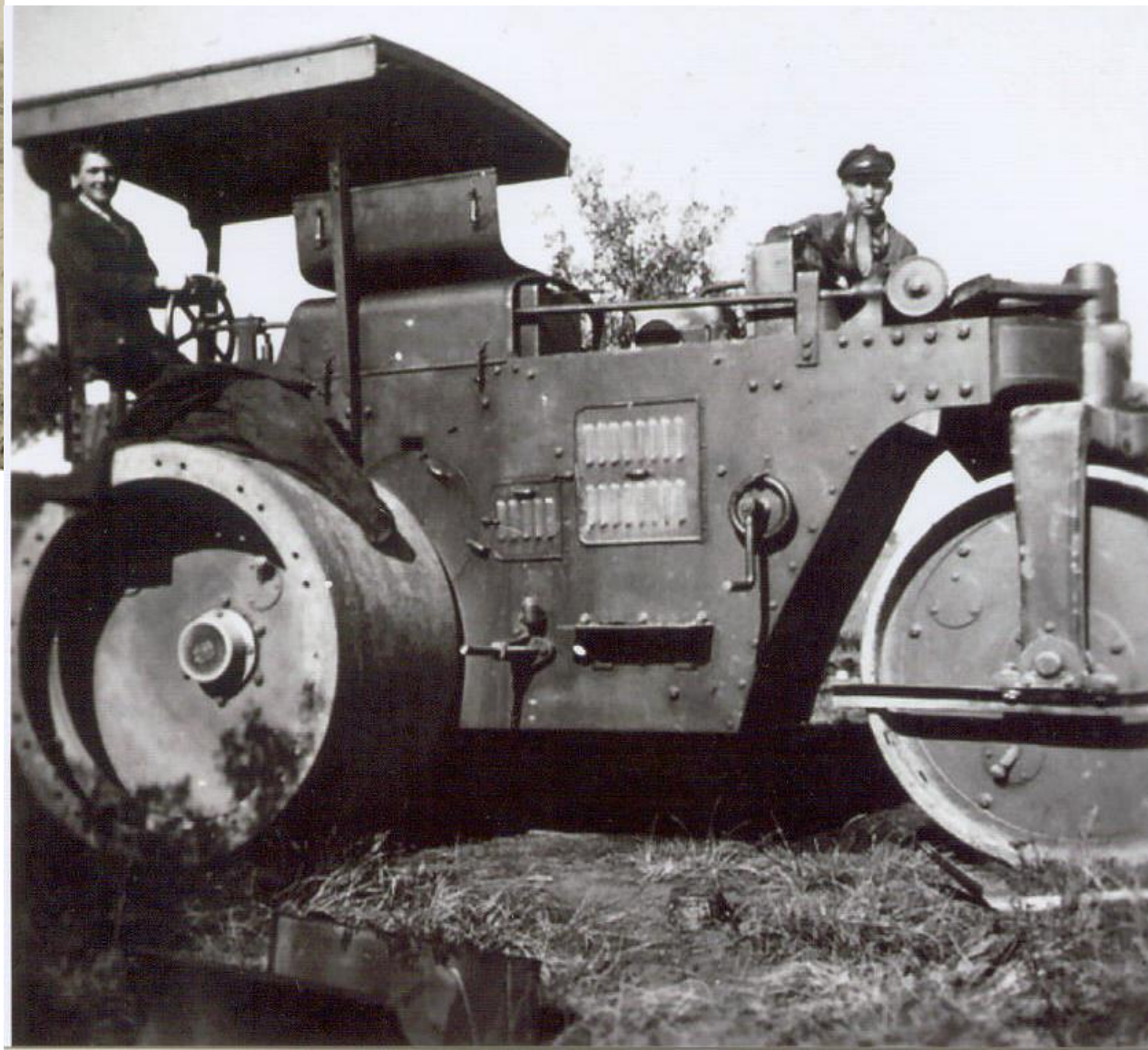
Stavební díl 31











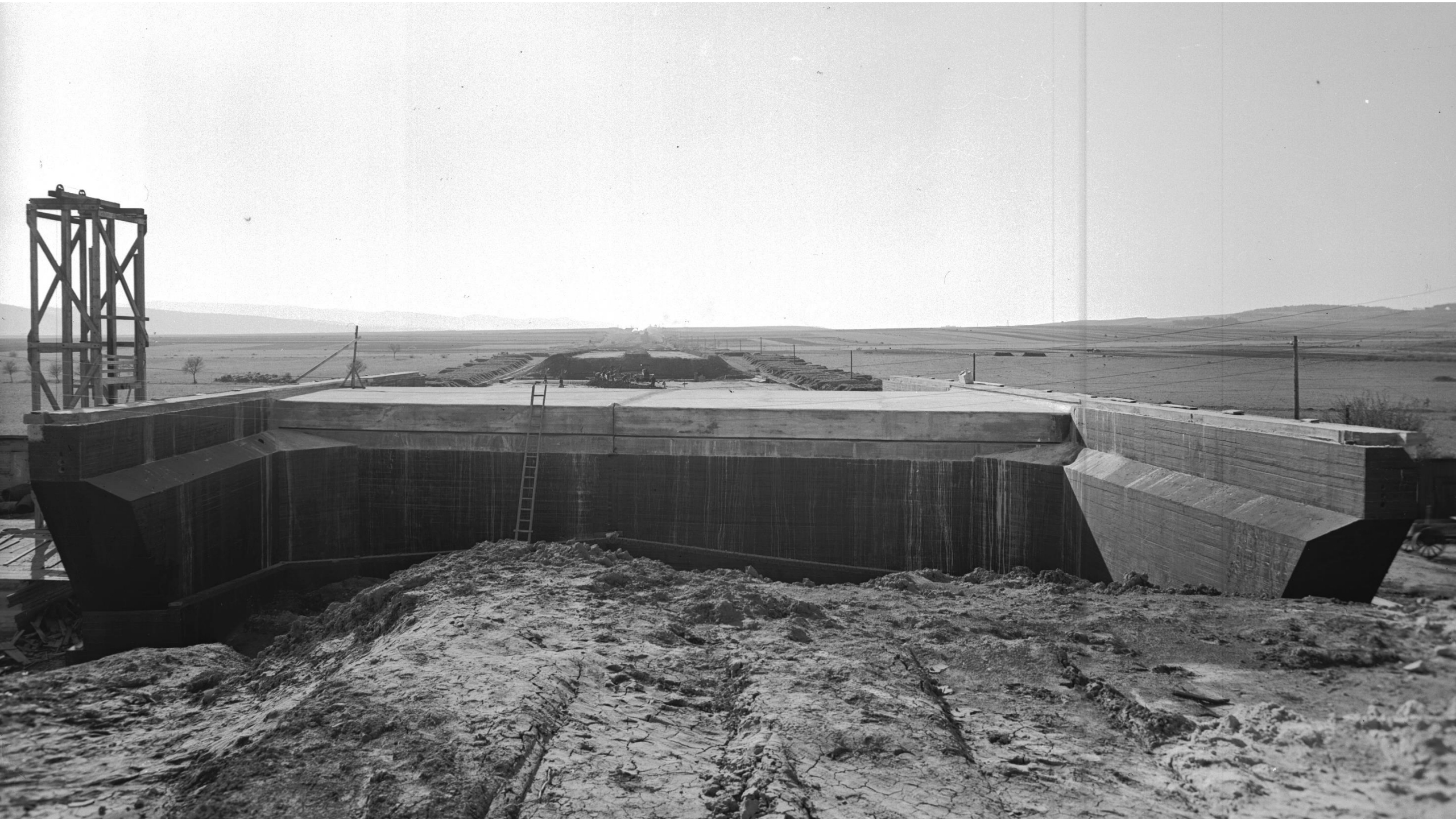






















Bauwerk 1023
 Unterführung der Bez.-Straße
 Batschowa-Suditz
 Teilp. 470,3+220 Brückenkl. I
 L.W. 9,0m L.H. 4,50m
 Kreuzungsw. 90°

Bauwerk 1023 a
 Unterführung des
 Semitschbaches
 Teilpunkt 470,4+20,80
 L.W. 5,50m L.H. 4,00m
 Kreuzungswinkel 90°

Geändrung

























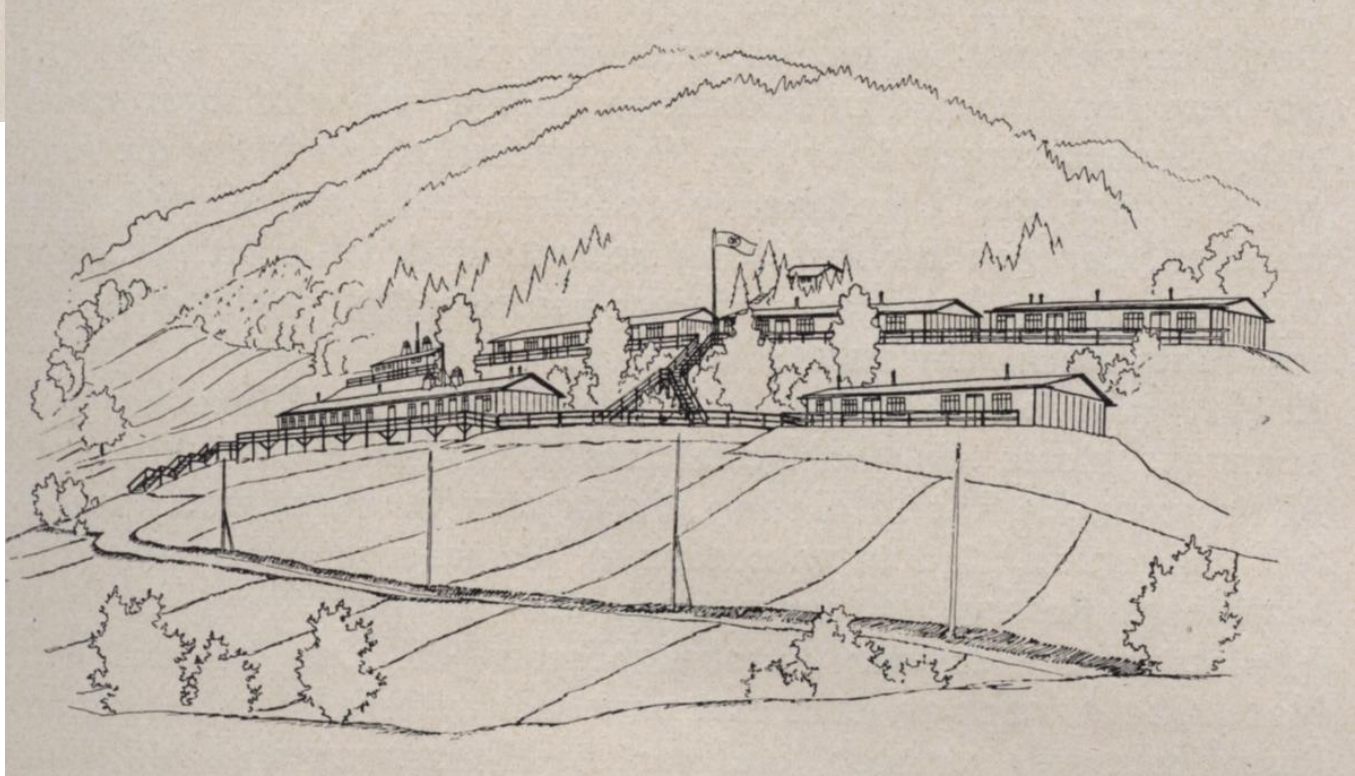
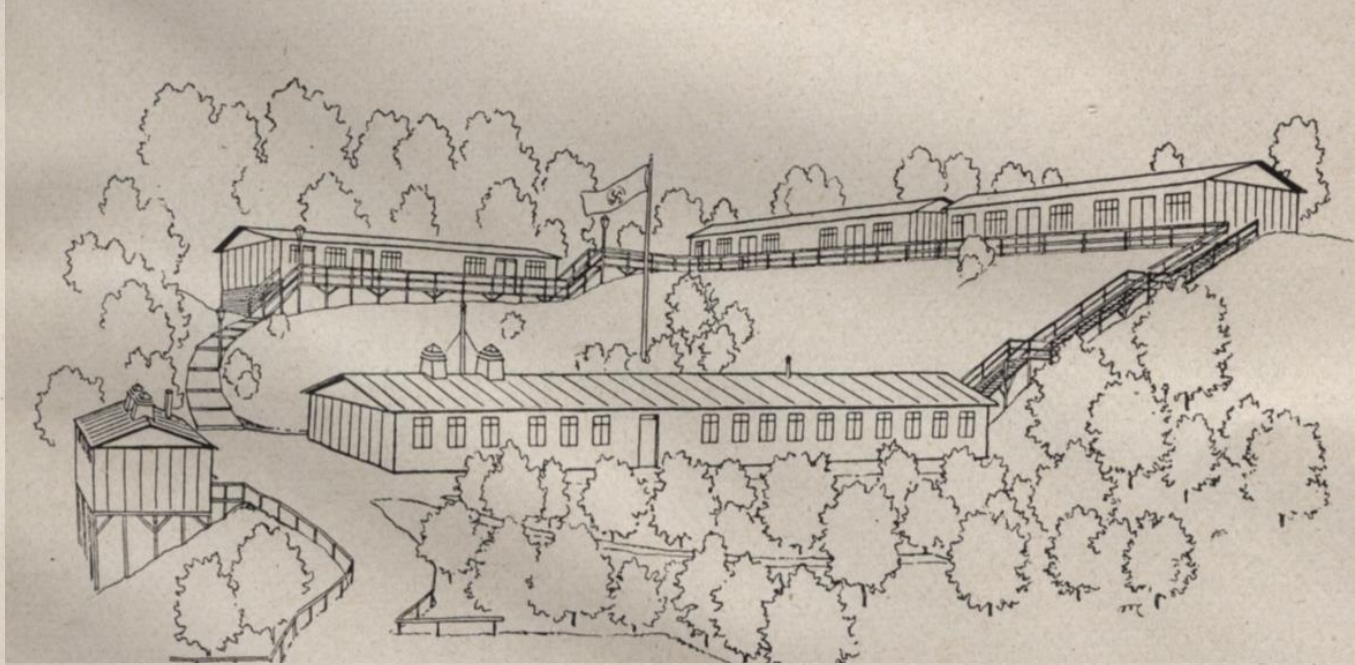
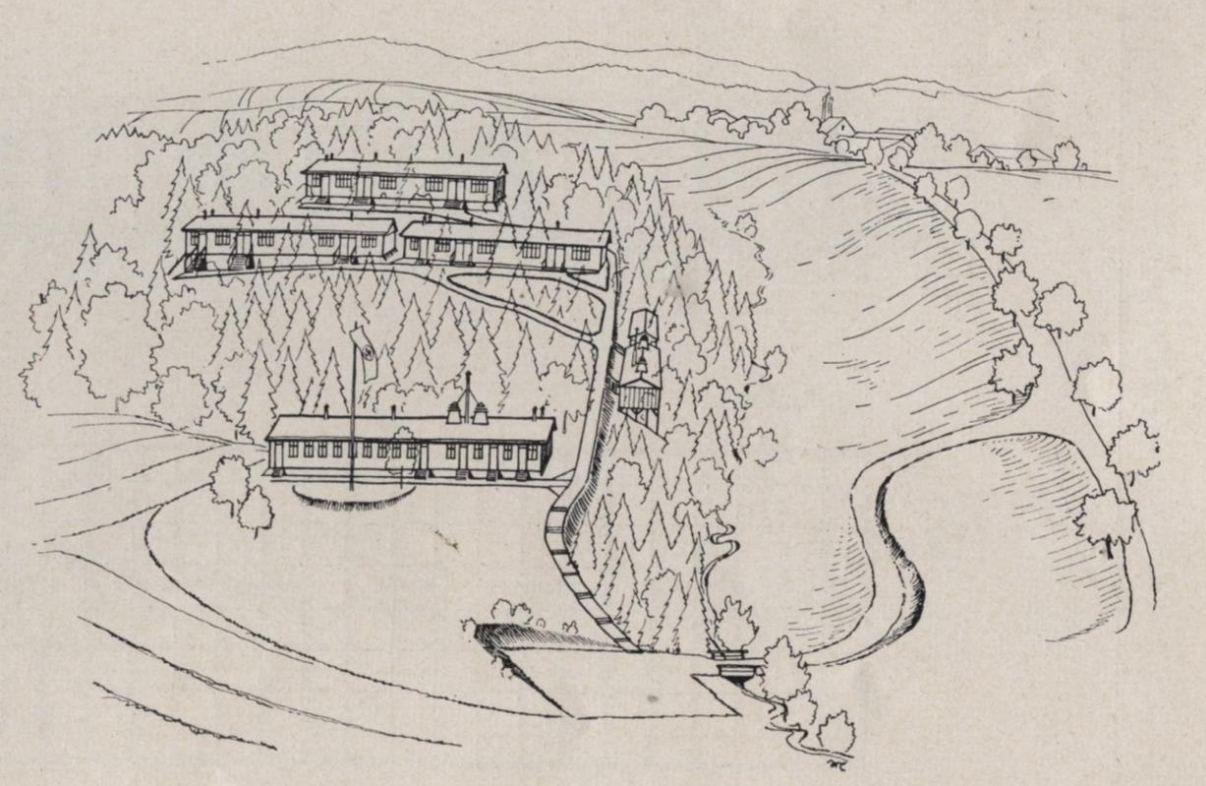










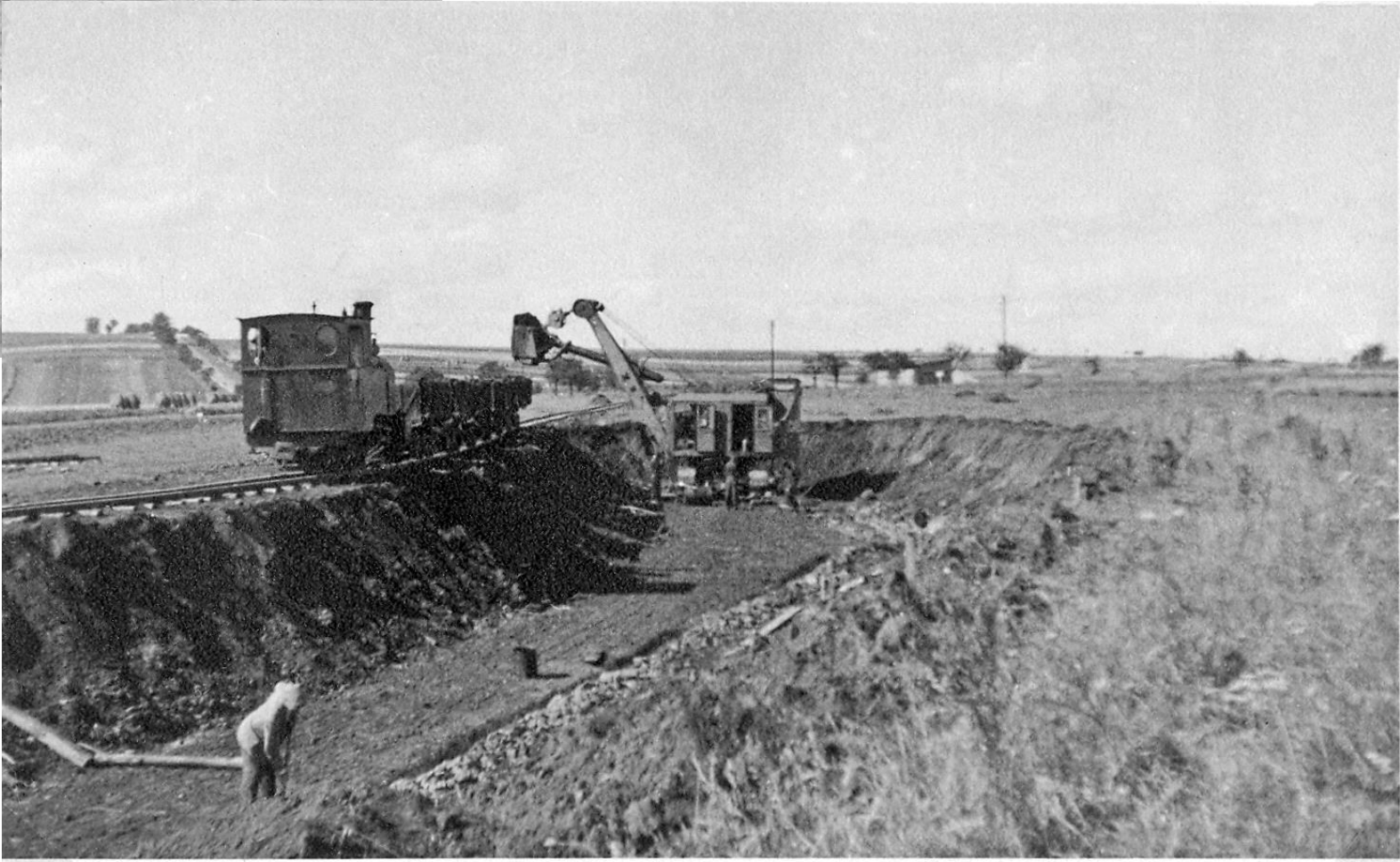


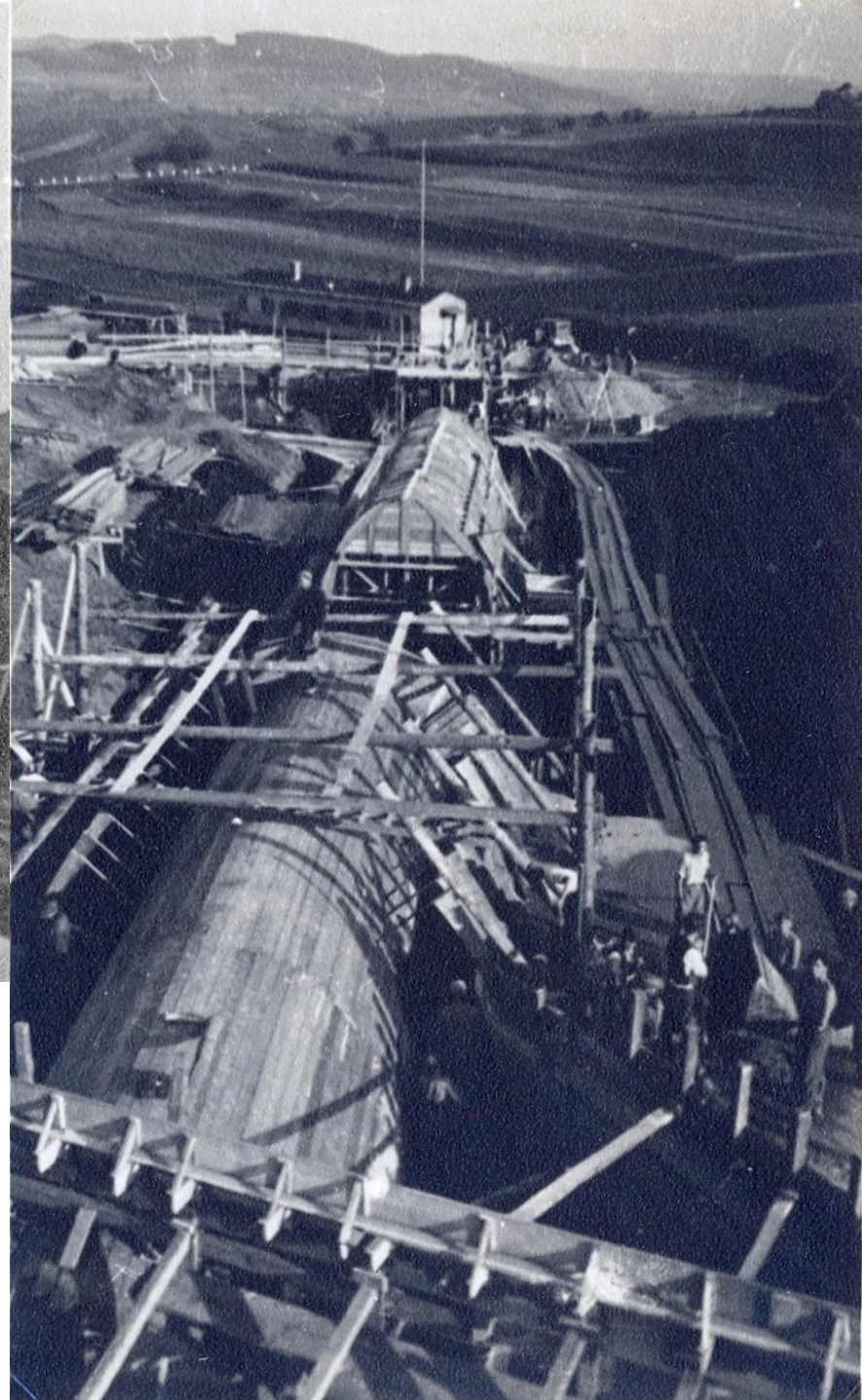
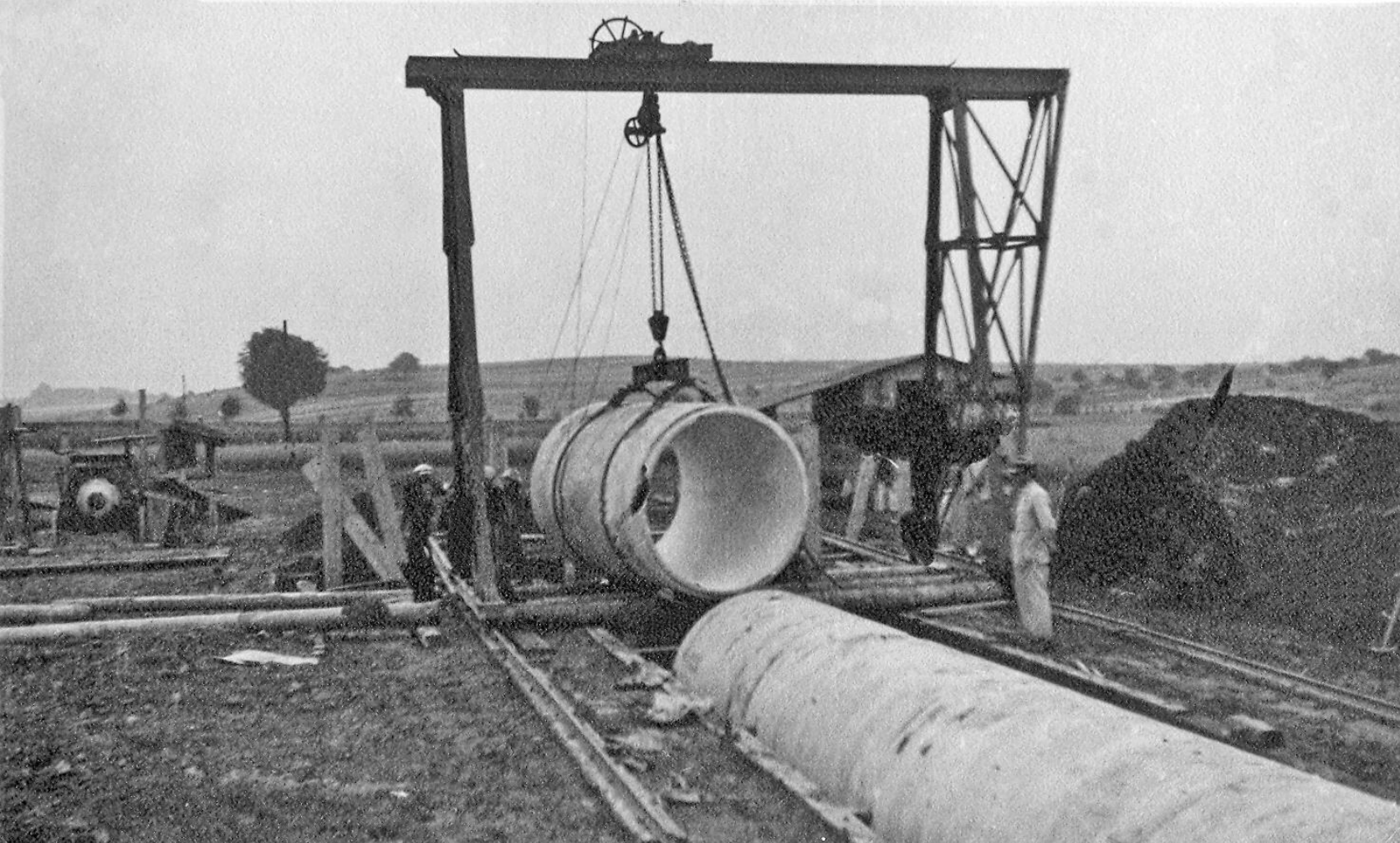






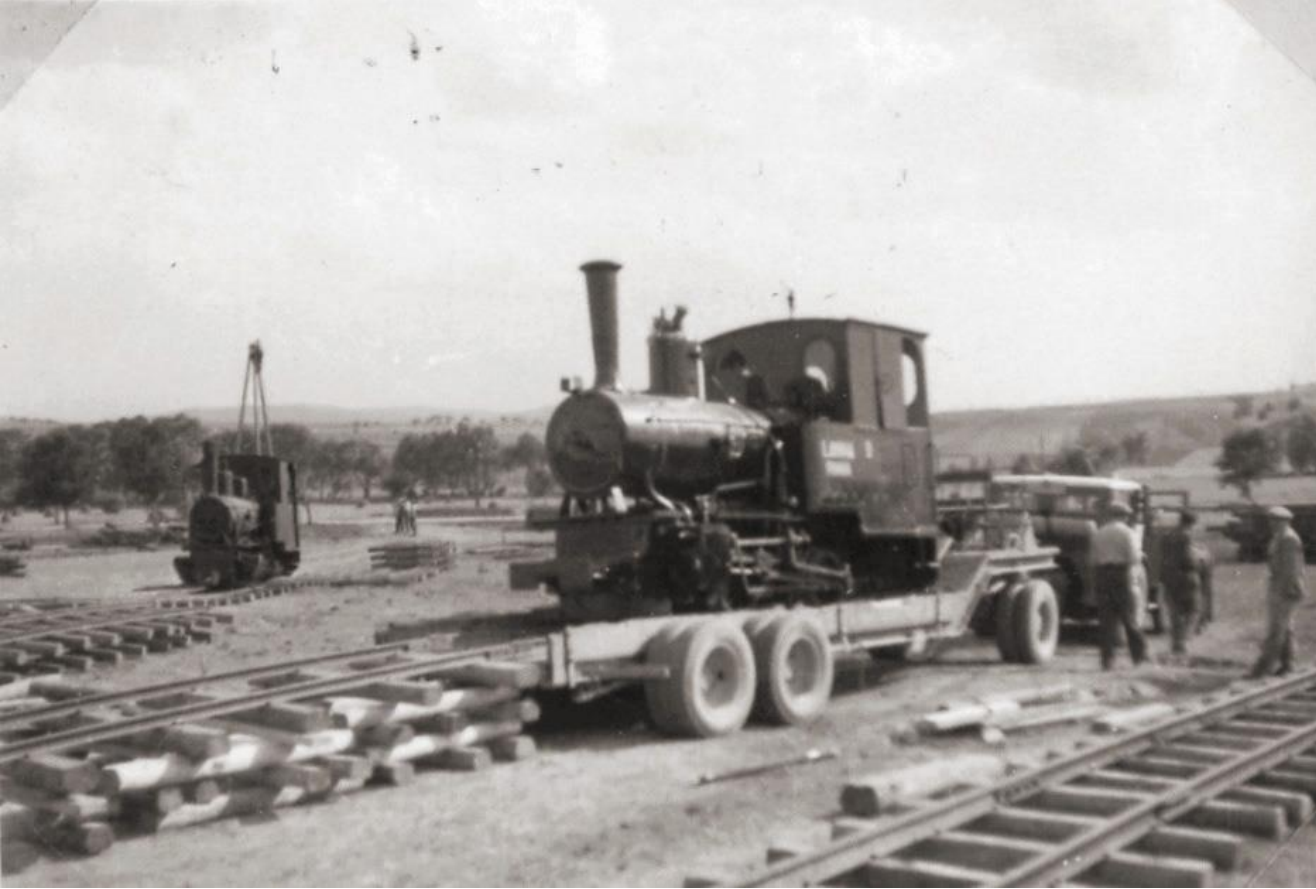




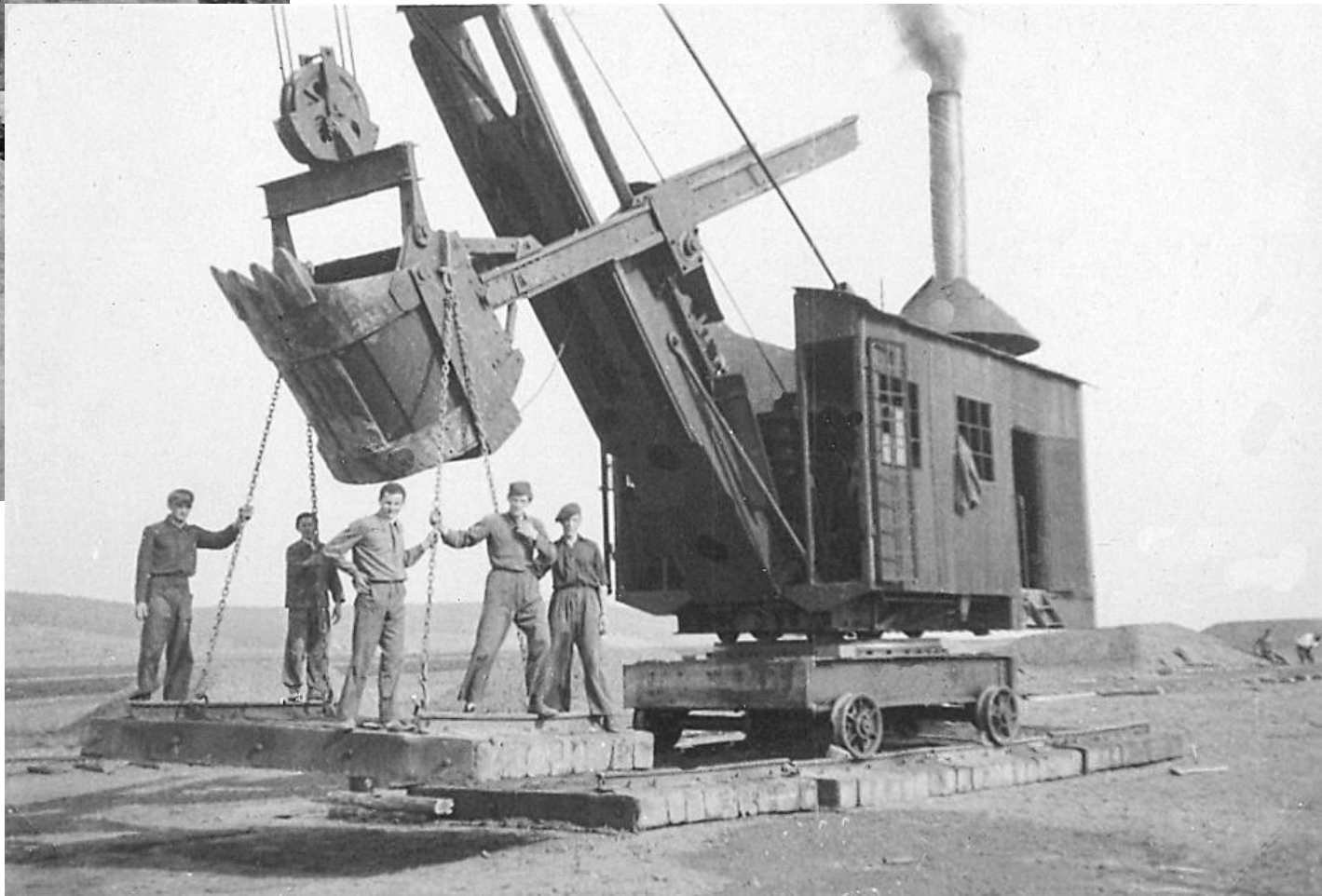
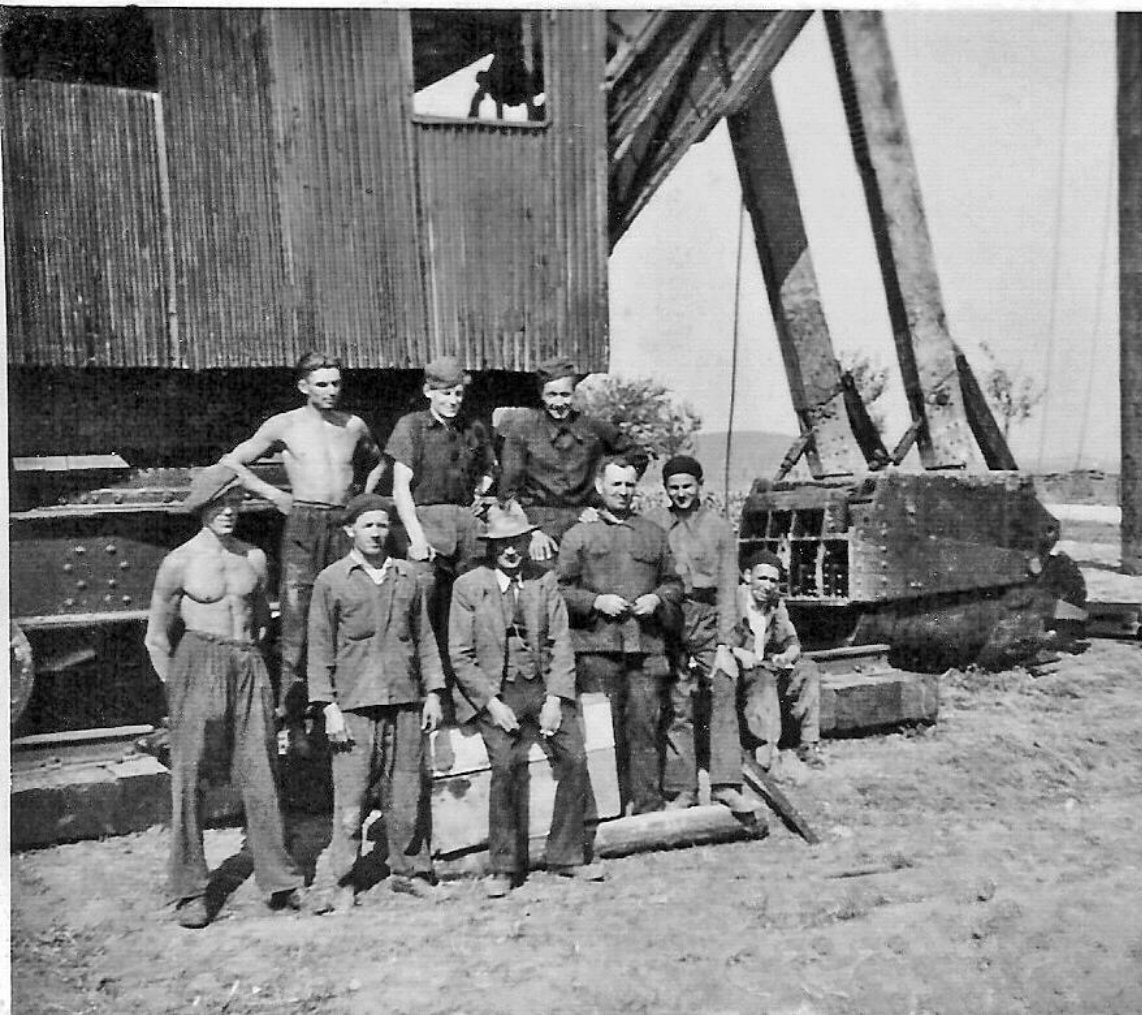




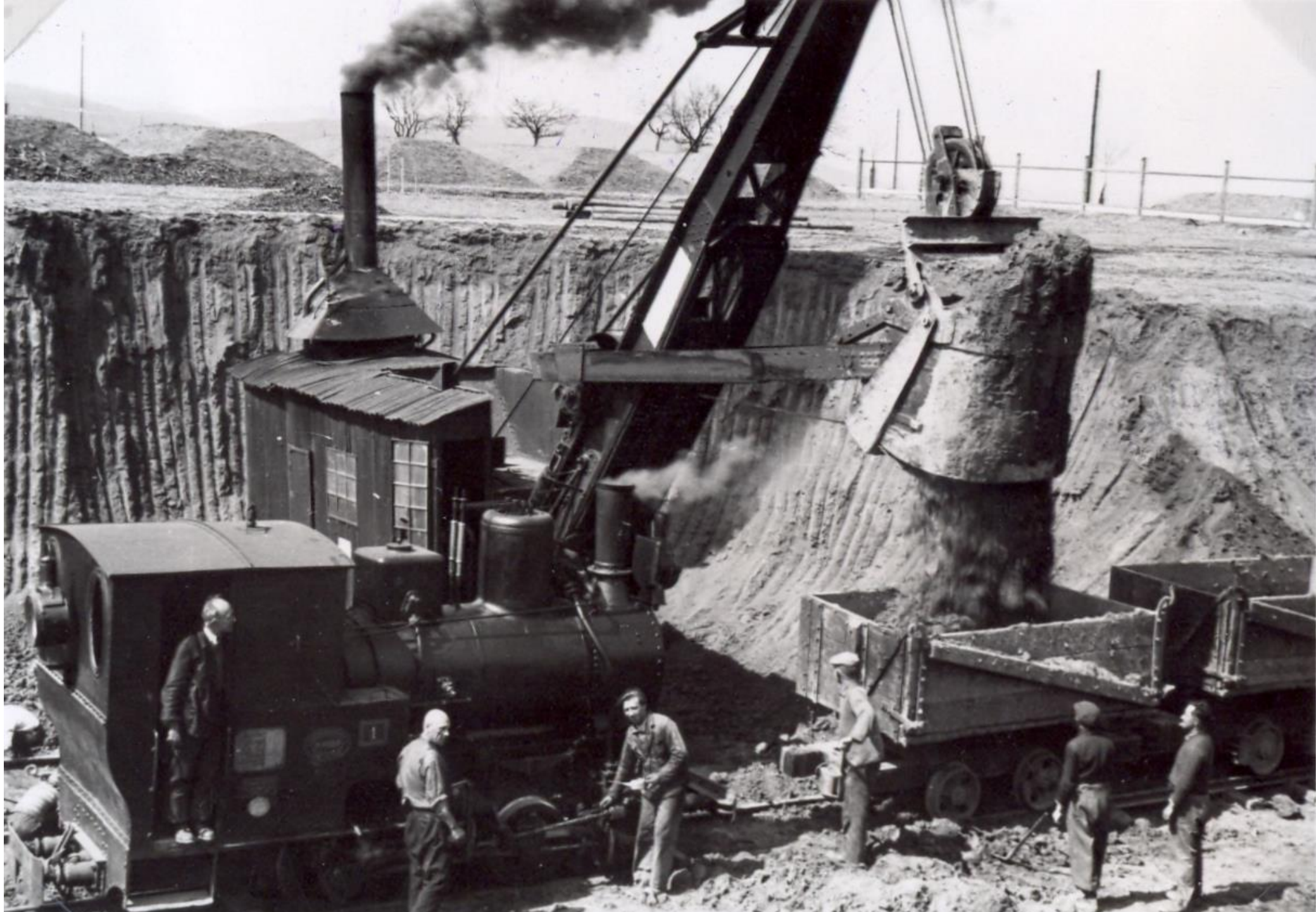










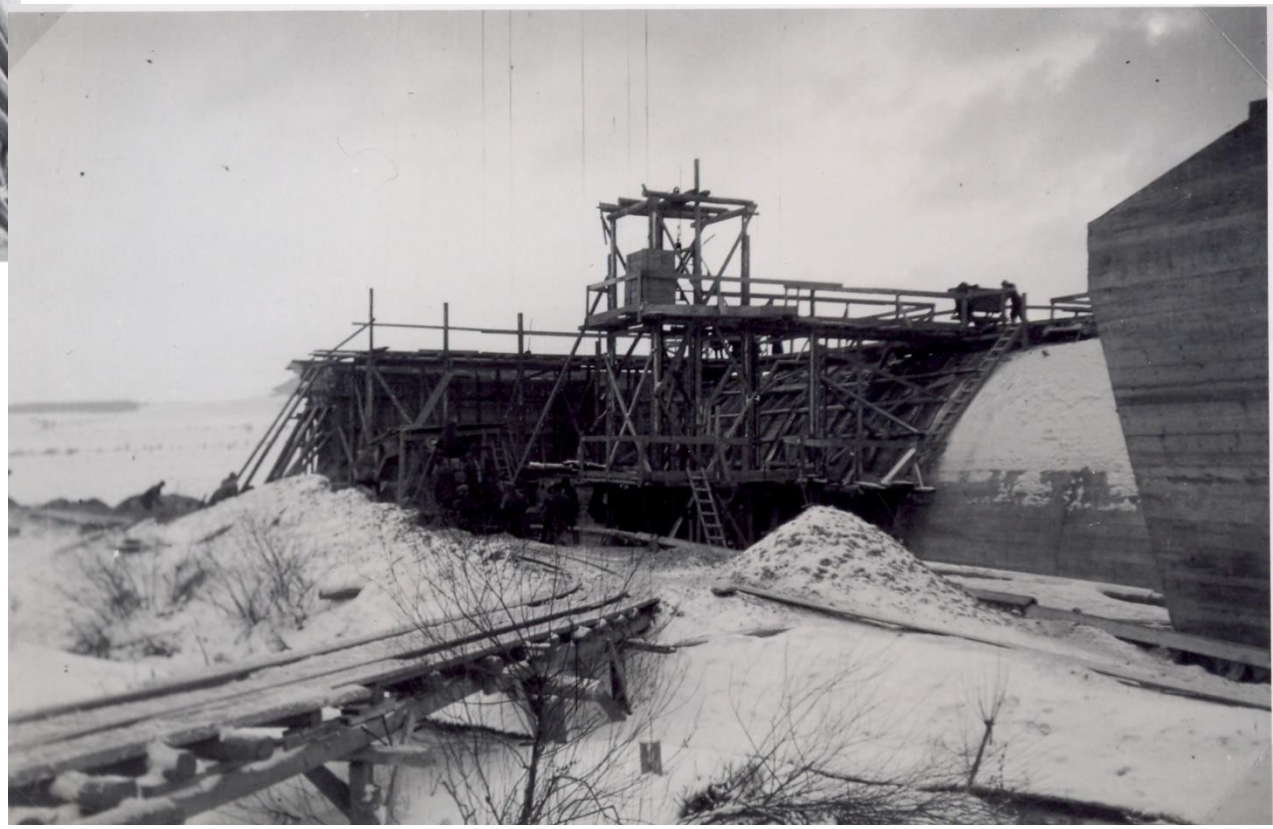
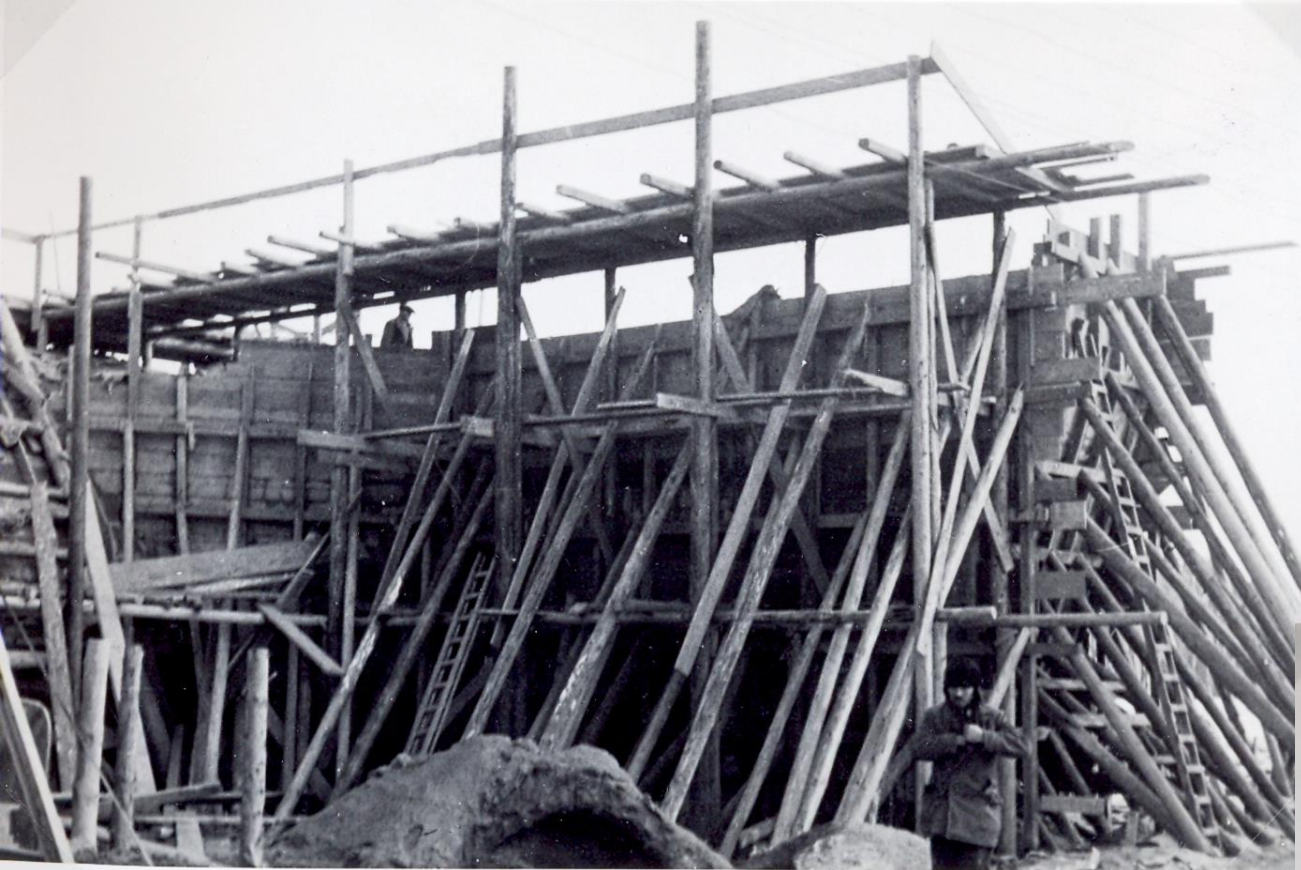




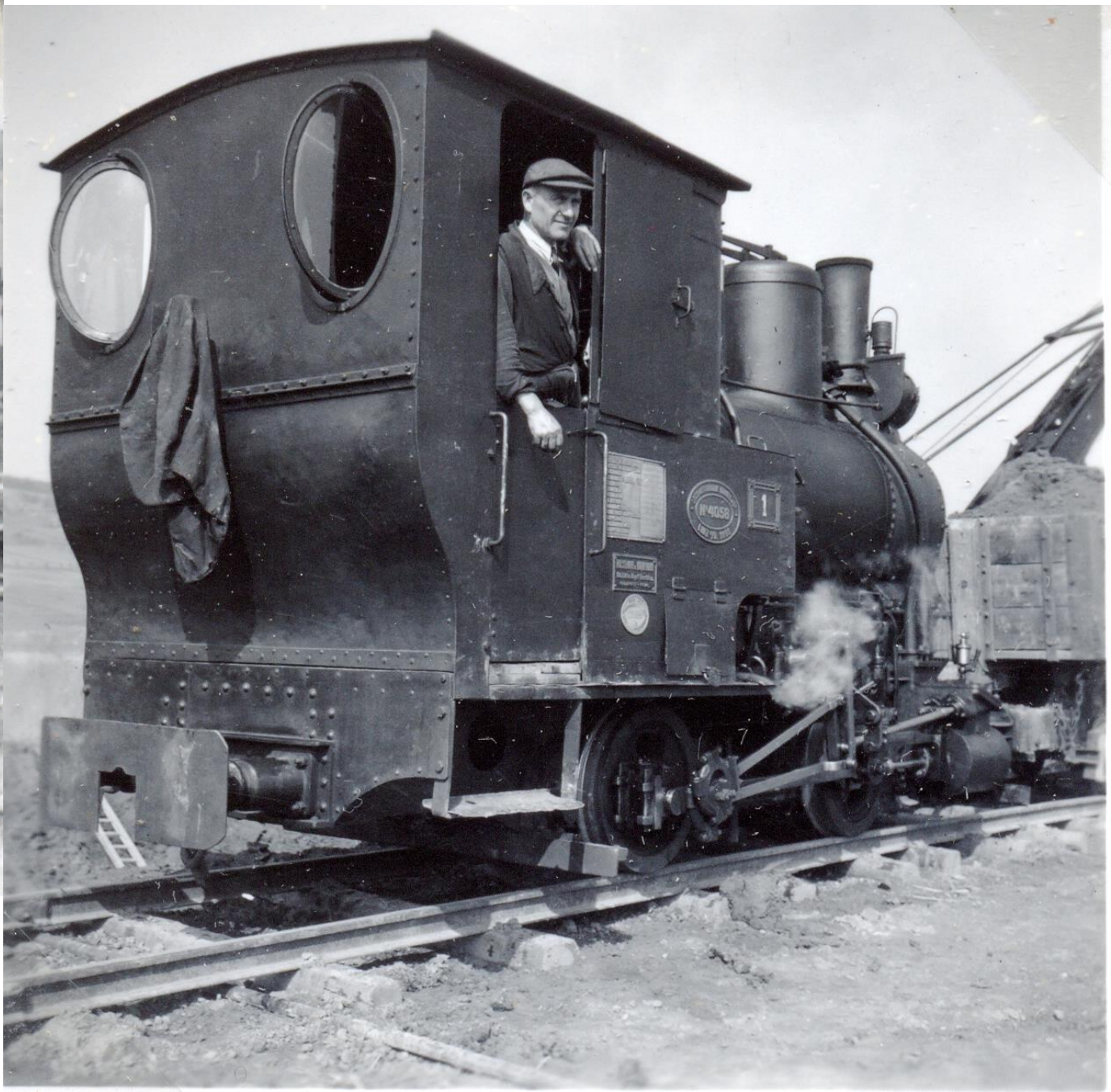
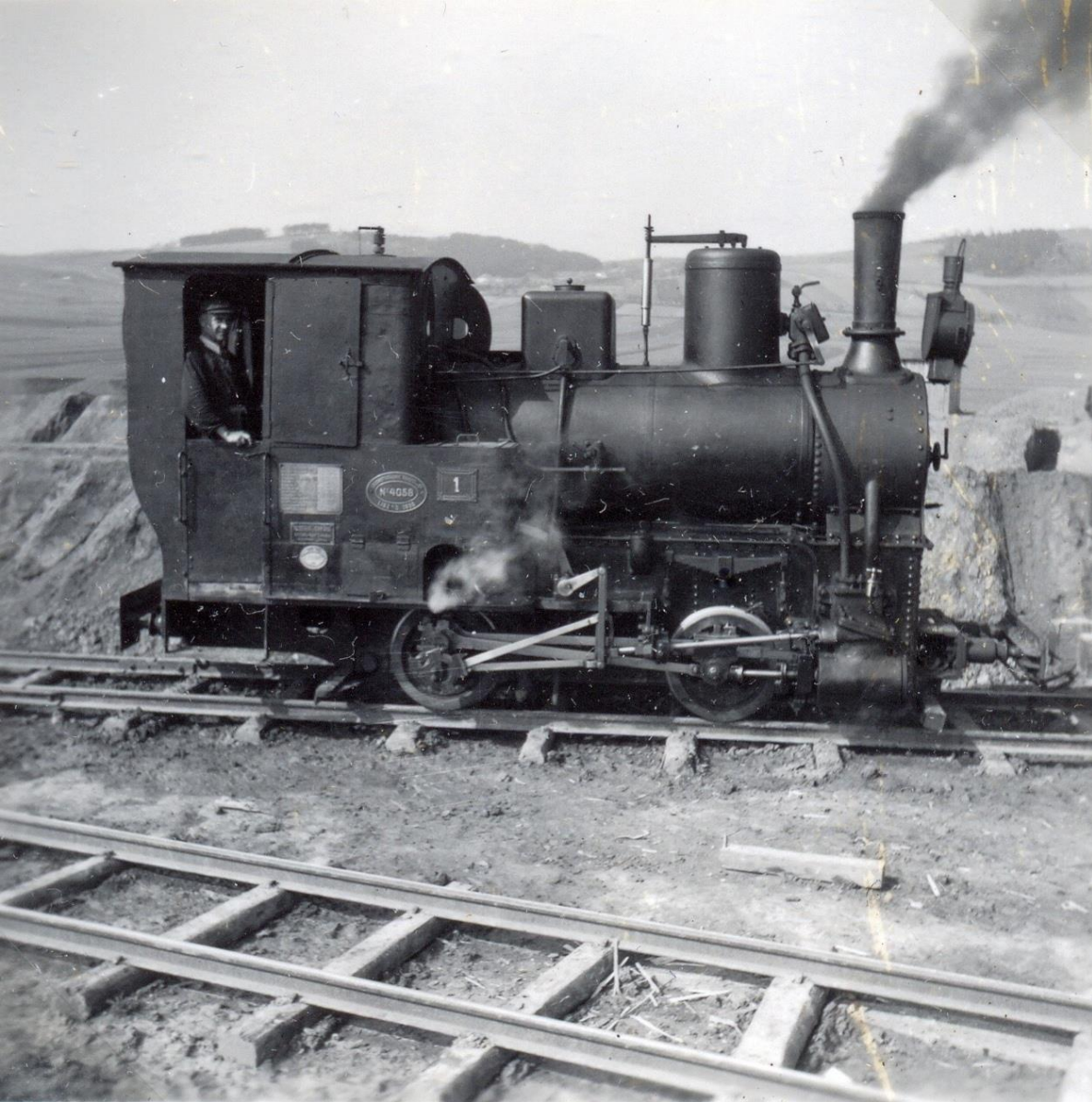


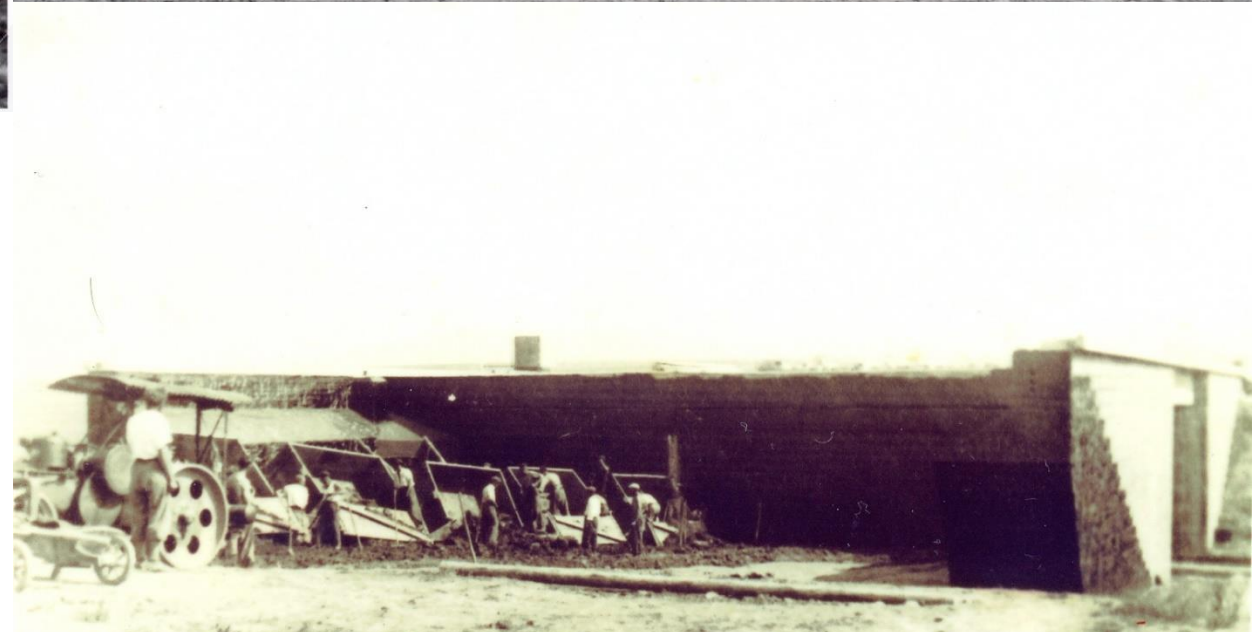


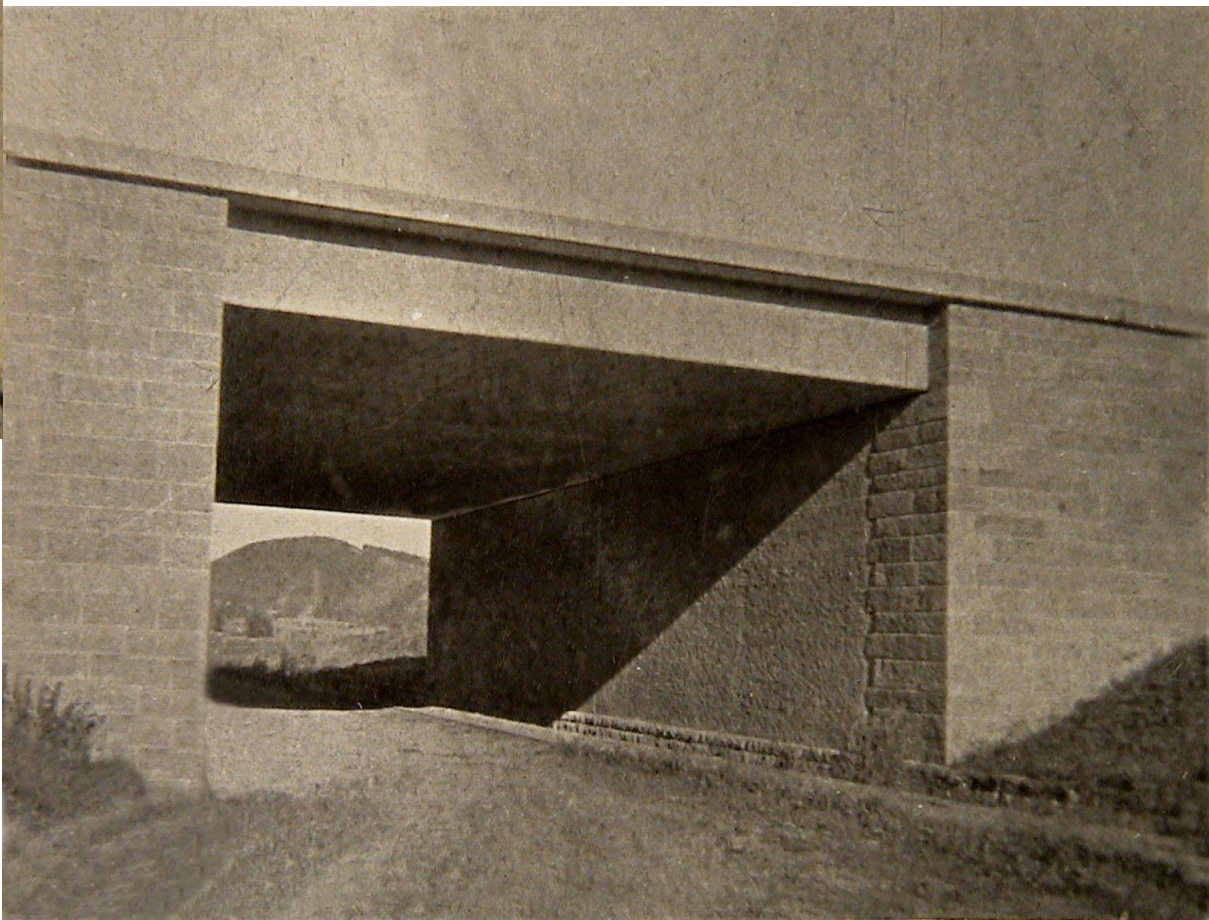
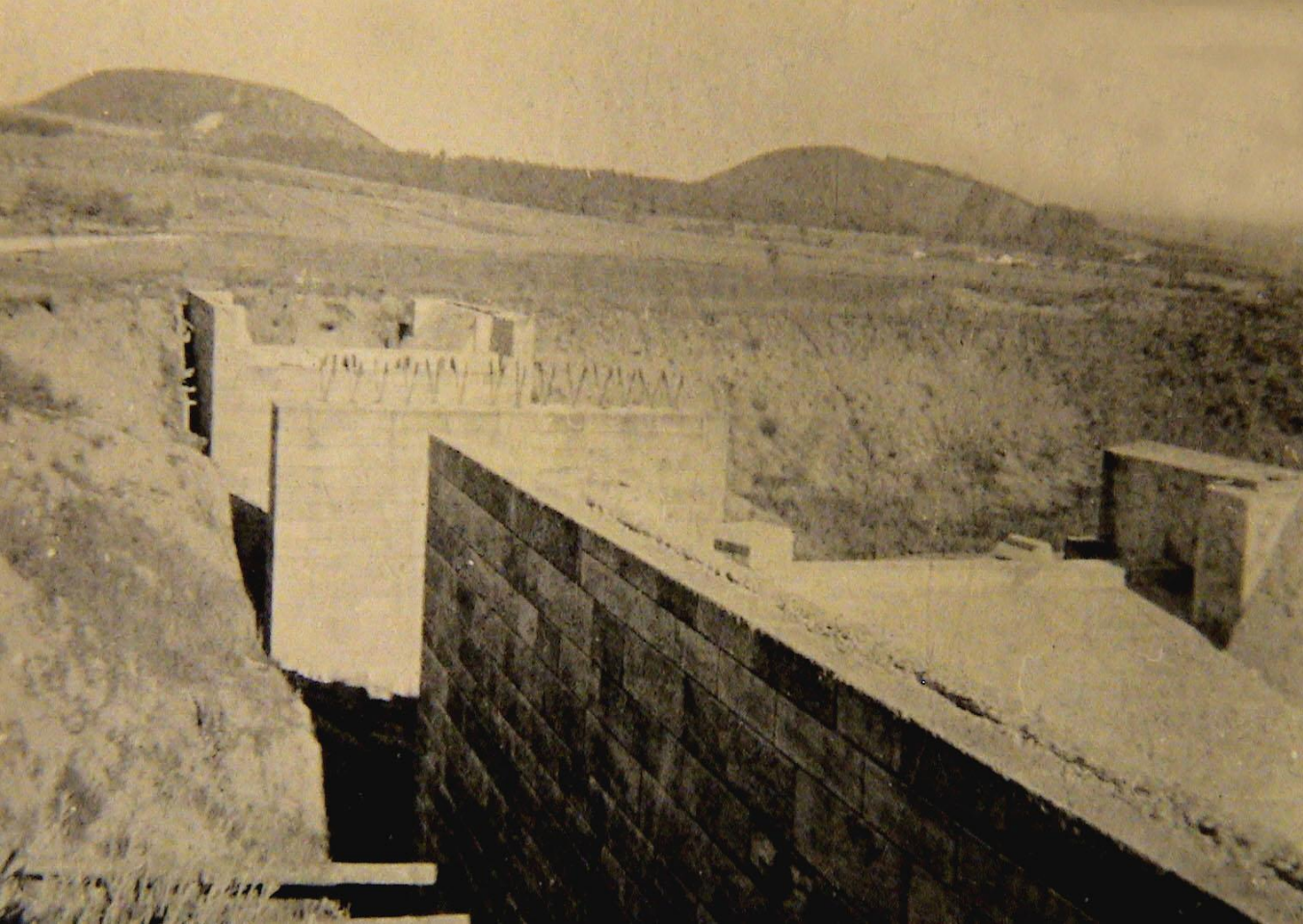
















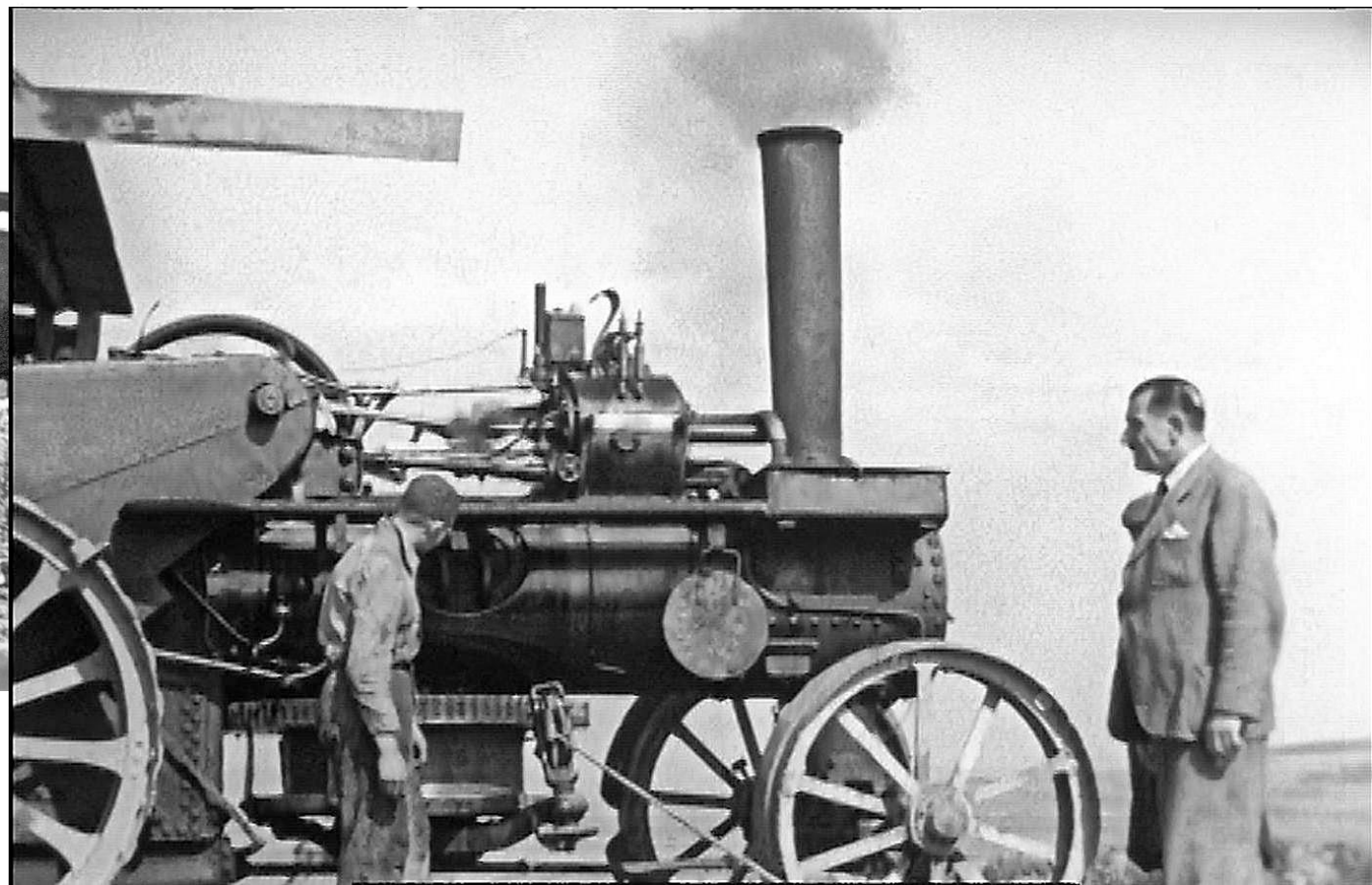














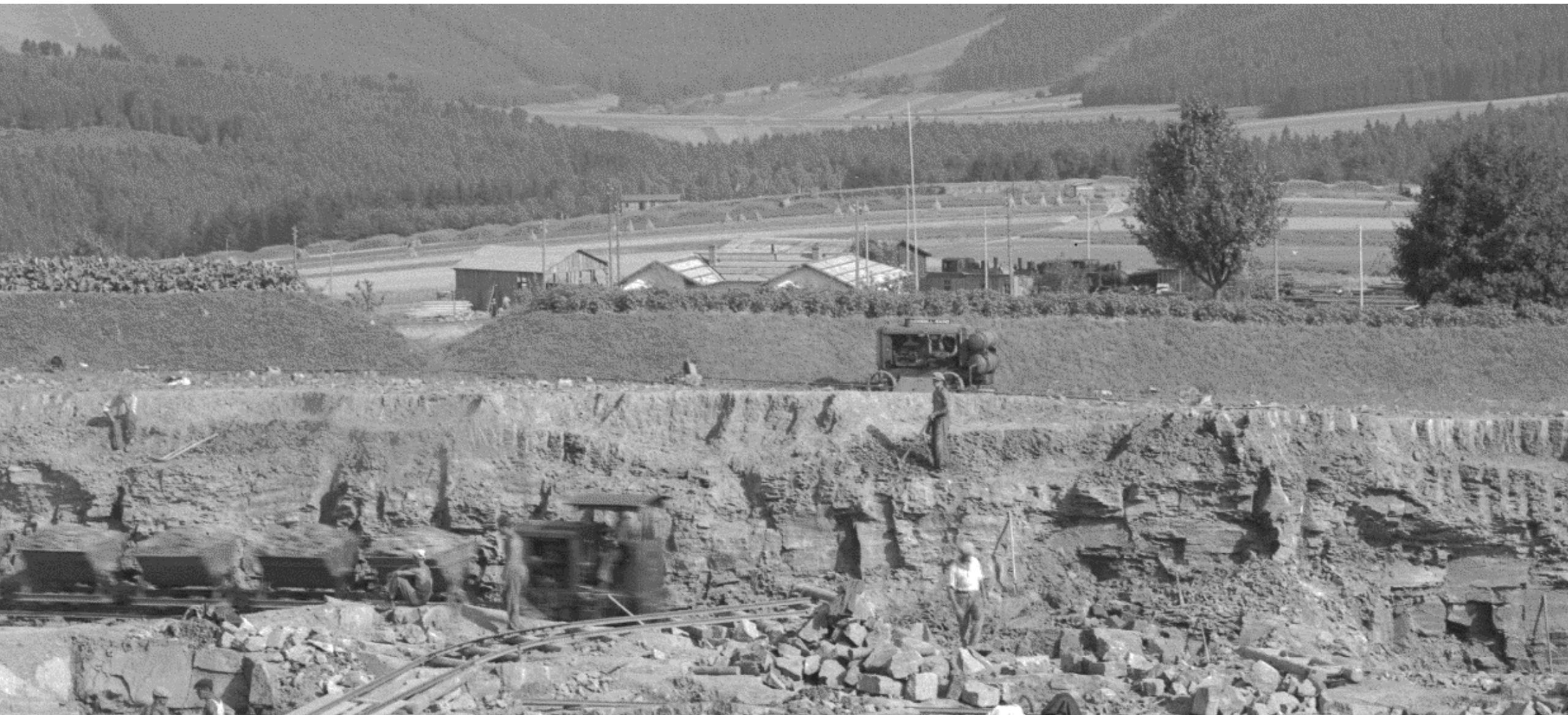












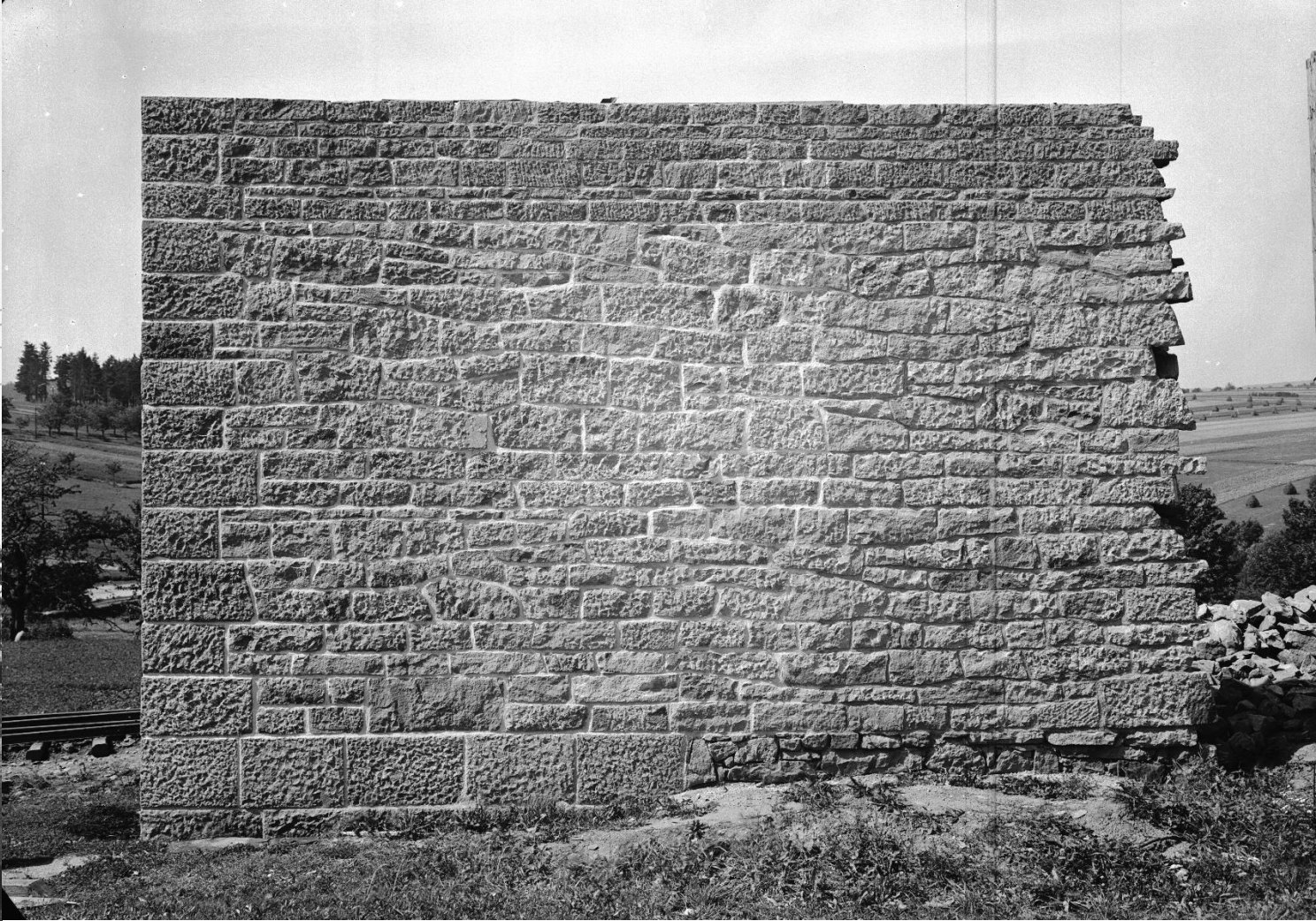








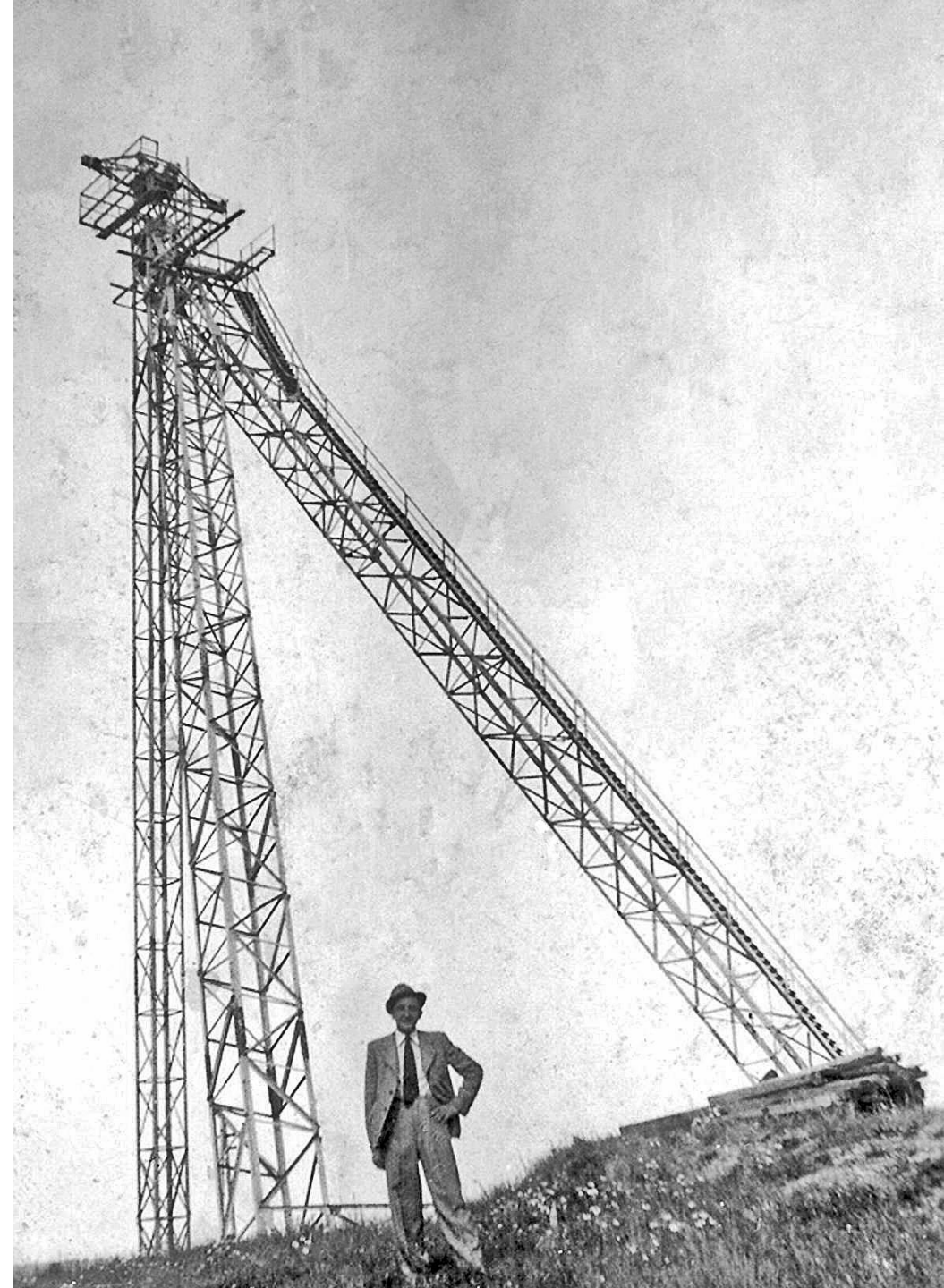
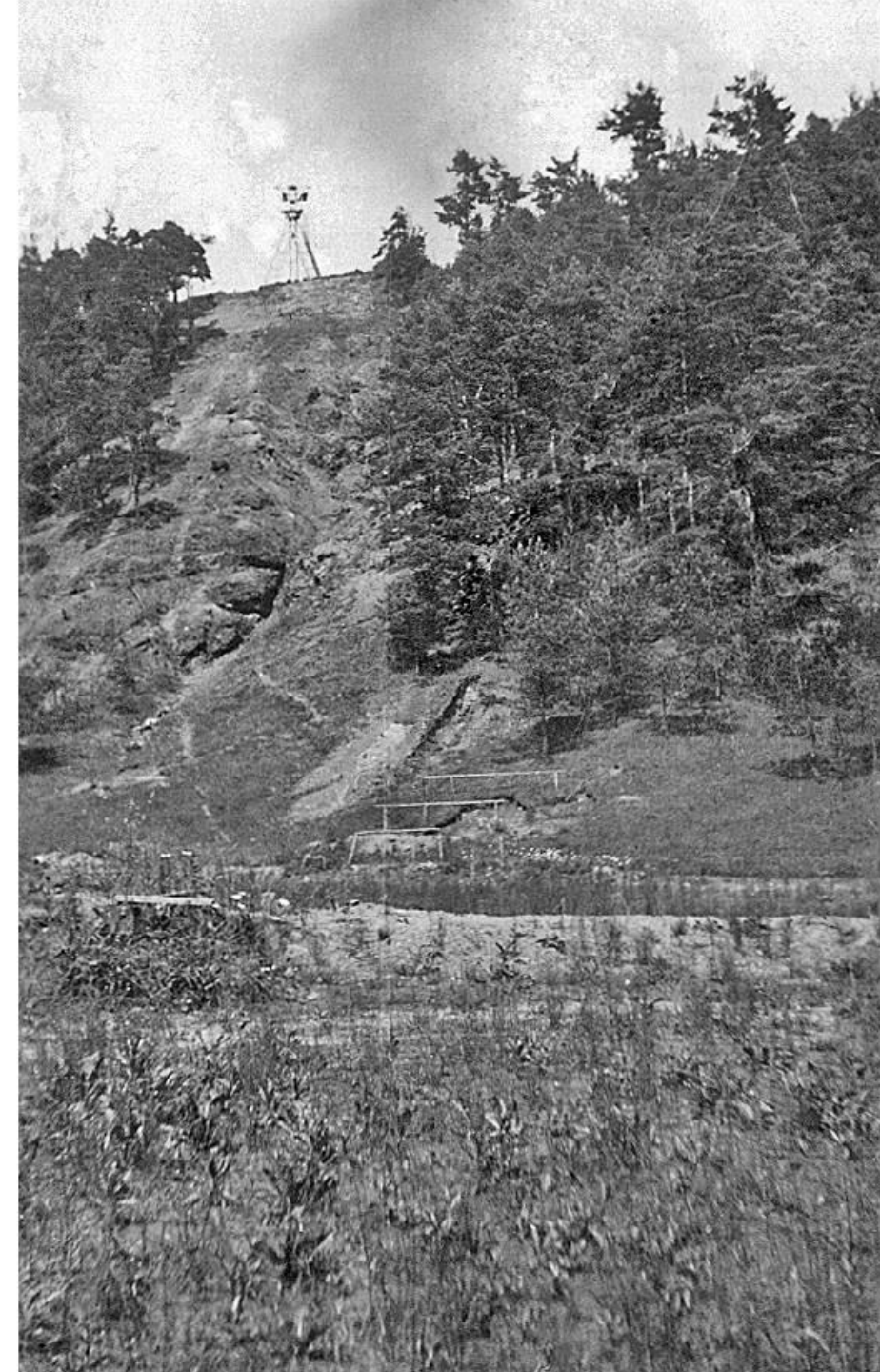
















Most
Lom
Tábory
Stavební
zázemí

